

Punchhelpers' Free Sampler Collection – Installation and Read Me Files

The elements provided in this collection were developed by Patricia Gamburg and are free of charge.

They should be used for personal projects only.

This collection can be installed within any Punch ® based program (Punch®, TurboFloorPlan®, Avanquest®, etc.)

Disclaimer: The elements included in this collection represent only the **design's intent and concept**.

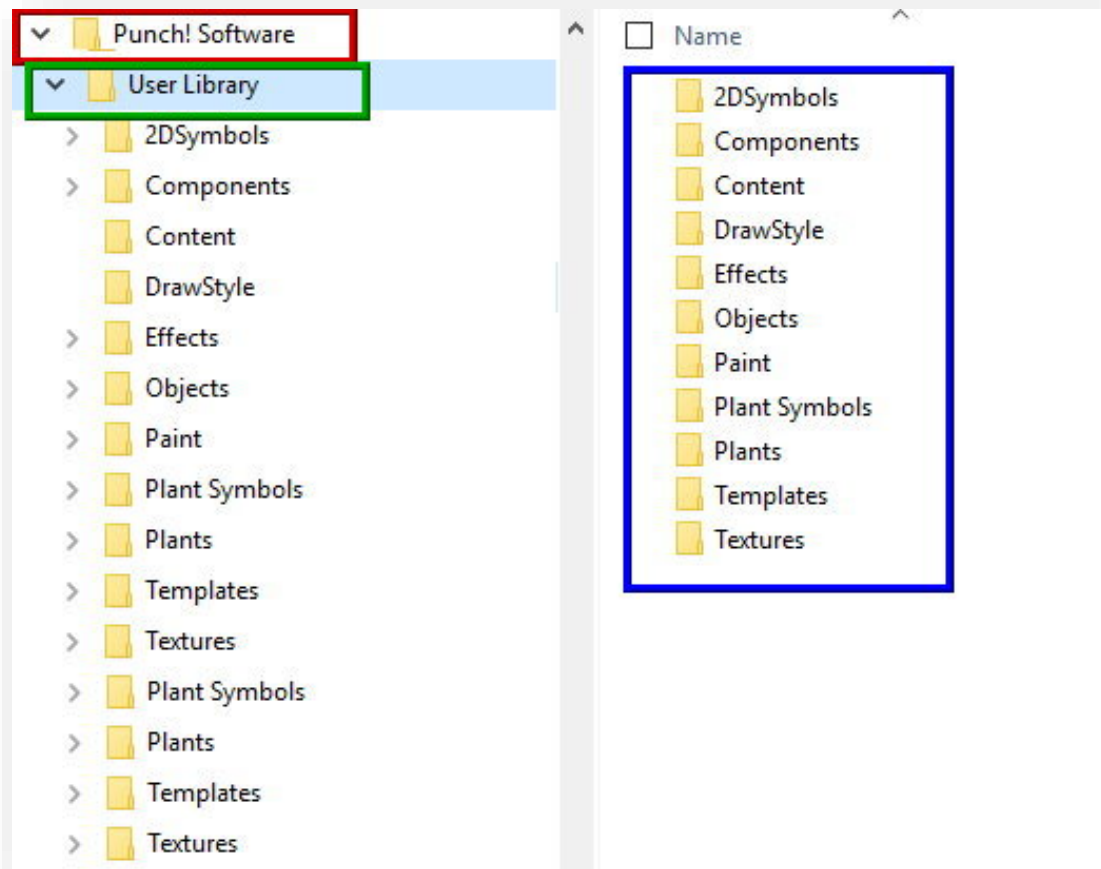
The designer is responsible for the visual aspects of the production only, and all specifications provided relate solely to the general appearance of the object and not to matters of engineering, electrical, technical, plumbing, foundations, roofing or structural soundness and/or safety. The implementation of this design must comply with the most stringent applicable federal and local safety as well as fire codes. The designer is not qualified to determine technical or structural appropriateness of the designs and will not assume responsibility for damages resulting through improper engineering and/or implementation in the handling of the elements of the collection.

Notice that the elements in this collection are not reproducing any specific brand or type of element, and they are not following any technical specification.

The Magazines included in this collection are just PDF files, so they can be opened with any PDF reader.

Instructions for Installation (Windows)

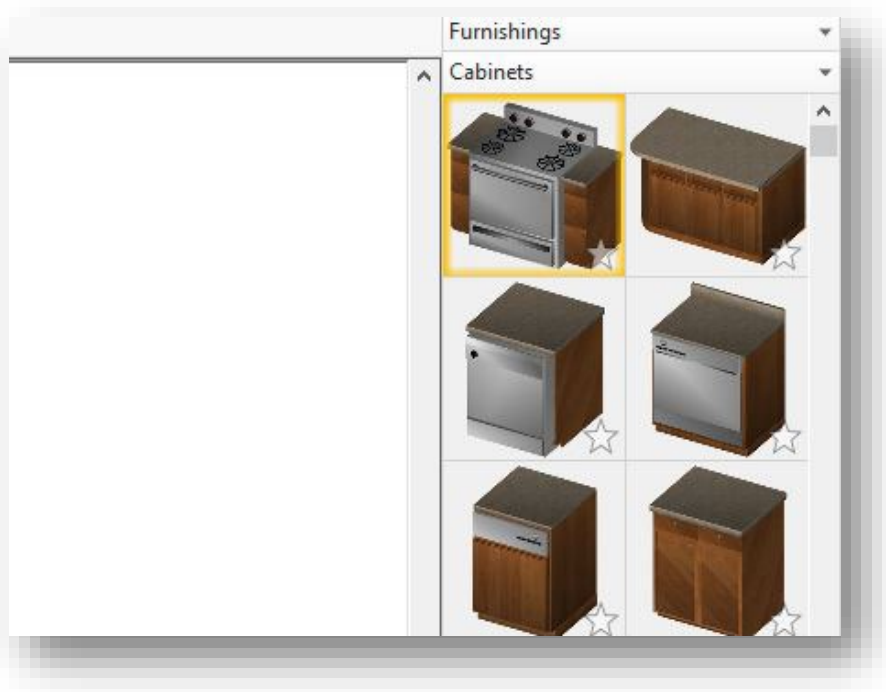
1 – Go to Windows Explorer => My Documents => Punch Software (or TurboFloorPlan or the name of the program) (outlined in red in the image below) => User Library (outlined in green in the image below).



2 – Each folder of this collection must be installed in the specific subfolder of the program (all the folders are outlined in blue in the image above), following the following settings:

- Pat 2D Symbols => copy to => Documents\Punch! Software\User Library\2DSymbols.
- Pat Doors => copy to => Documents\Punch! Software\User Library\Components\Doors.
- Pat Edging => copy to => Documents\Punch! Software\User Library\Components\Edging.
- Pat Objects => copy to => Documents\Punch! Software\User Library\Objects.
- Pat Textures => copy to => Documents\Punch! Software\User Library\Textures.
- Pat Trims => copy to => Documents\Punch! Software\User Library\Components\Trim.
- Pat Windows => copy to => Documents\Punch! Software\User Library\Components\Windows.

3 – Once you copy all the files, the libraries will appear in each category and subcategory, as shown in the image below.



4 – You can resize the objects, edit the textures, etc.

5 – Repeat the process for the different libraries, categories, etc.

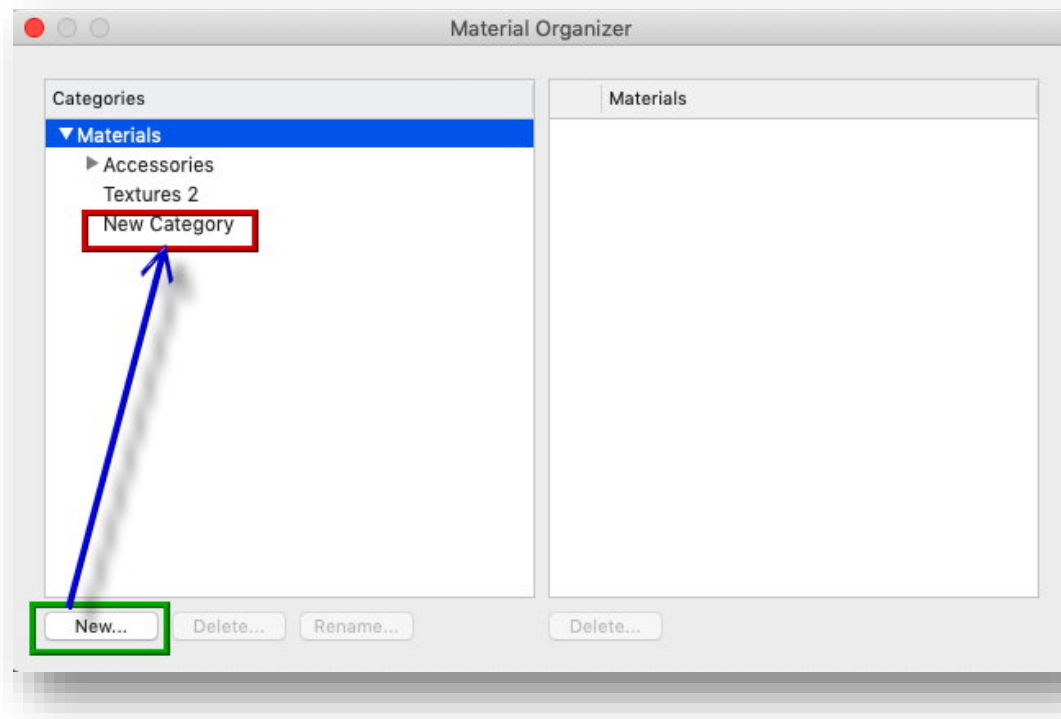
Instructions for Installation (Mac)

1 – Open your Mac program (Punch Software ®, TurboFloorPlan ®, etc.) => Select the desired library => Notice that in the Mac programs some libraries (such as Materials, Paint Colors, and Trims, for example) are visible only when a 3D view is open.

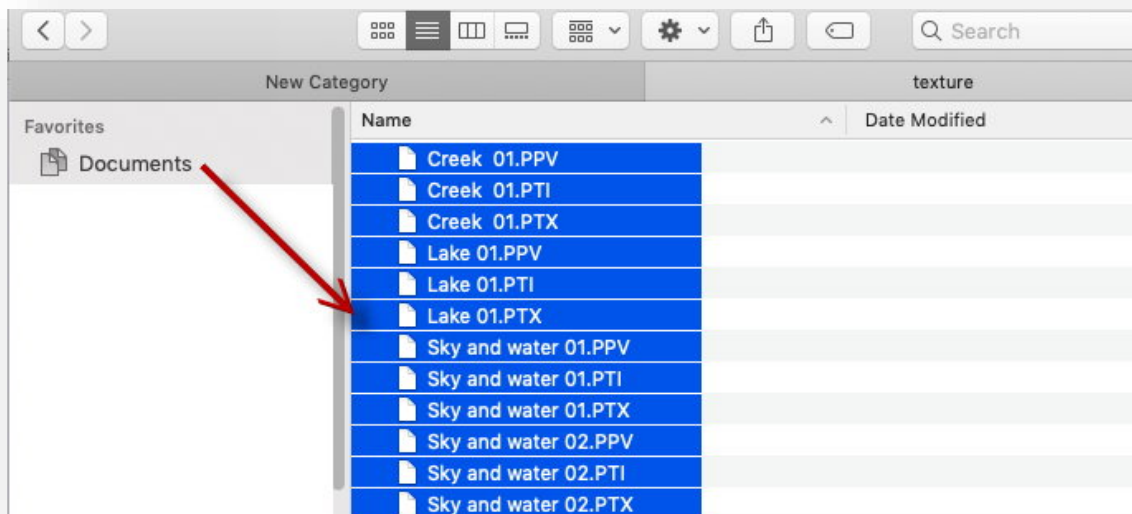
2 – In this example, we are selecting the Materials Library (outlined in green in the image below). Select any category / subcategory (Wood / Weathered in this case) => click on the gear button (outlined in red in the image below) => select User Library Organizer (outlined in blue in the image below)



3 – Opening the Library Organizer for a certain library allows the creation of new categories and subcategories specifically for this library. In this case => click on the “New” button (outlined in green in the image below) => a New Category will be created (pointed with a blue arrow and outlined in red in the image below). You can rename the new category and created the desired subcategories. In this example, we will copy the Backgrounds subcategory (from Pat Materials) to New Category (User Library => Materials)

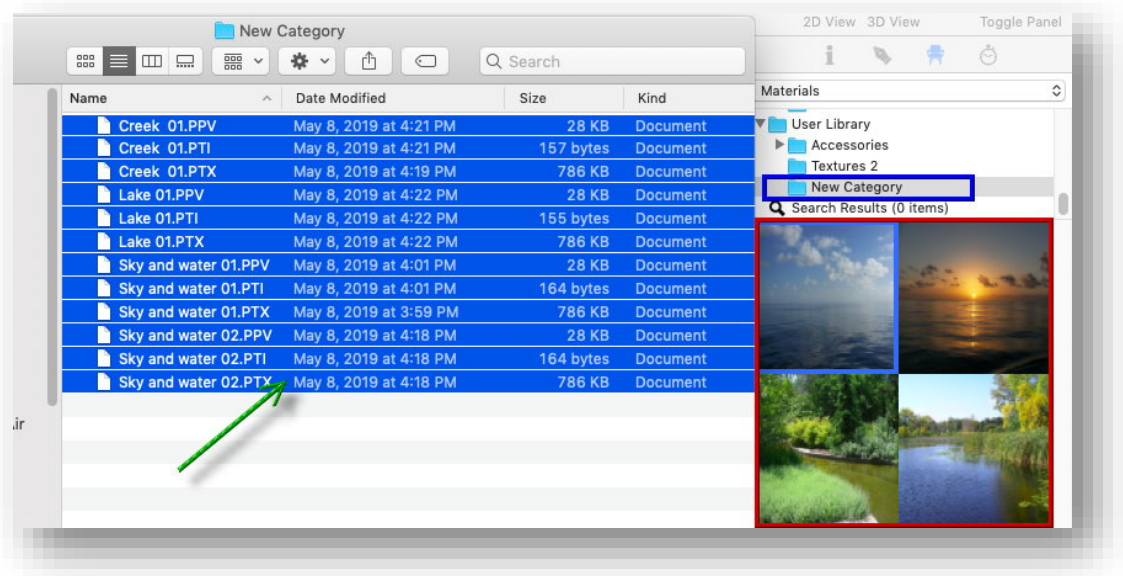


4 – Download the Collection items => place the files in a folder of your computer + In this case, I set them in the Documents folder, as shown in the image below. Select all the files (12 in this case) => Right click => Copy the 12 files.



5 – Go to your Mac program (Punch Software ®, TurboFloorPlan ®, etc.) => Select the desired library => go the previously created category (New Category, as per item 3, outlined in blue in the image below) => Right click => Show in Finder => the New category will open in Finder => Right click => Paste 12 items

(pointed with a green arrow in the image below) => the items will appear in the preview bar (outlined in red in the image below), and they are ready to be used.



6 – Repeat this process for all the libraries and desired categories.

If you experience problems, just send me an email and a screenshot of the issue to punchhelpers@punchhelpers.com.

Soon, we will have additional collections.

Enjoy!

Patricia